



Magnolia Boro, NJ

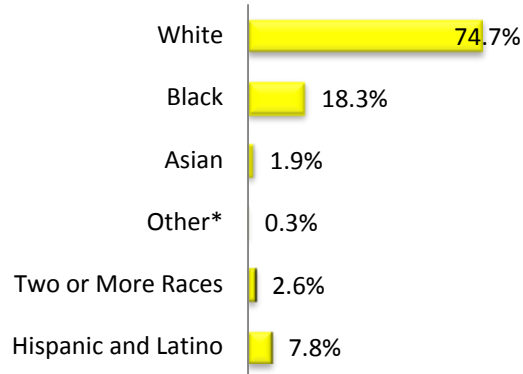
Camden County

Year Incorporated: 1915
 Municipal Type: Borough
 Form of Government: Borough

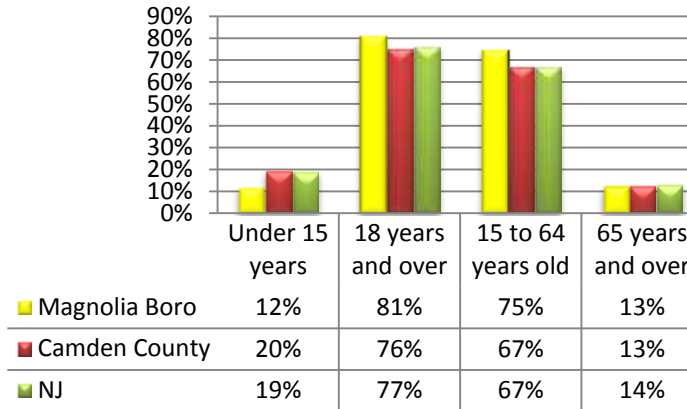
2013 Estimated Population: 4,321
 Population Change 2000-2013: -2.0%
 Population Density: 4,485.3 (per sq. mi.)

Demographics***

Race



Age



Dependency Ratio

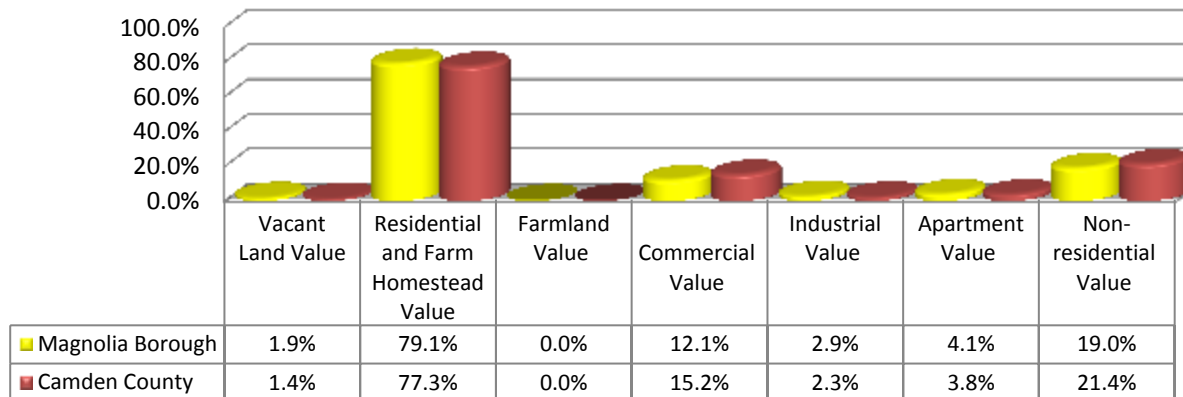
	2000	2012	% change
Magnolia Boro	50.2%	45.6%	-9.1%
Camden County	53.4%	59.2%	10.9%
New Jersey	51.8%	48.8%	-5.9%

The dependency ratio is the ratio of dependents (people younger than 15 or older than 64), to the working age population, those 15-64.

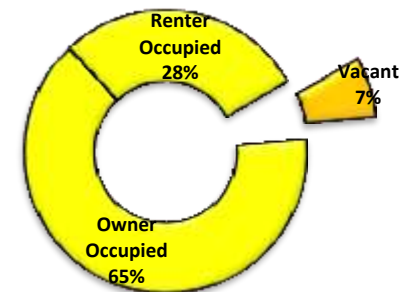
***Demographic information is from the 2012 American Community Survey and 2000 US Census.

Land Usage and Housing***

Parcel Values as a Percentage of Total Value



Housing Occupancy

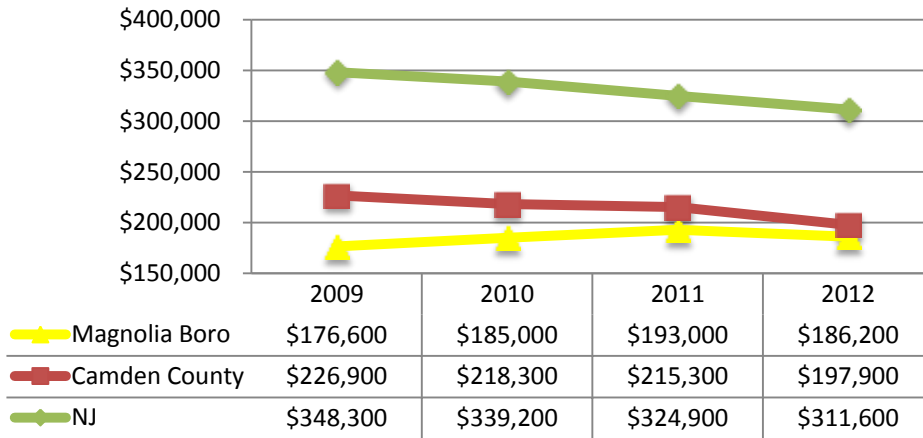


	Owner	Renter	Vacant
Magnolia Boro	64.6%	28.6%	6.9%
Camden County	65.7%	27.3%	7.1%
New Jersey	59.3%	30.3%	10.4%

***Land use and property tax data is from the NJ Department of Community Affairs.

Municipal Profiles were prepared by the Senator Walter Rand Institute for Public Affairs at Rutgers University-Camden

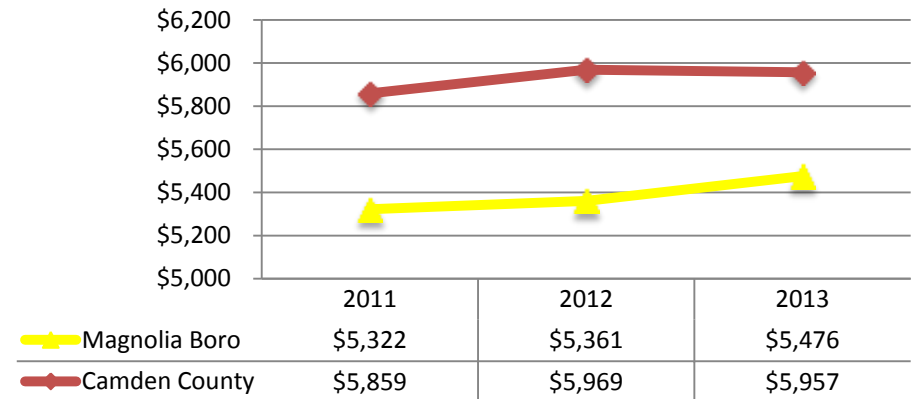
Median Housing Prices(in current dollars)



% change 2009-2012

Magnolia Boro: 5.4 Camden County: -12.8 NJ: -10.5

Average Property Tax



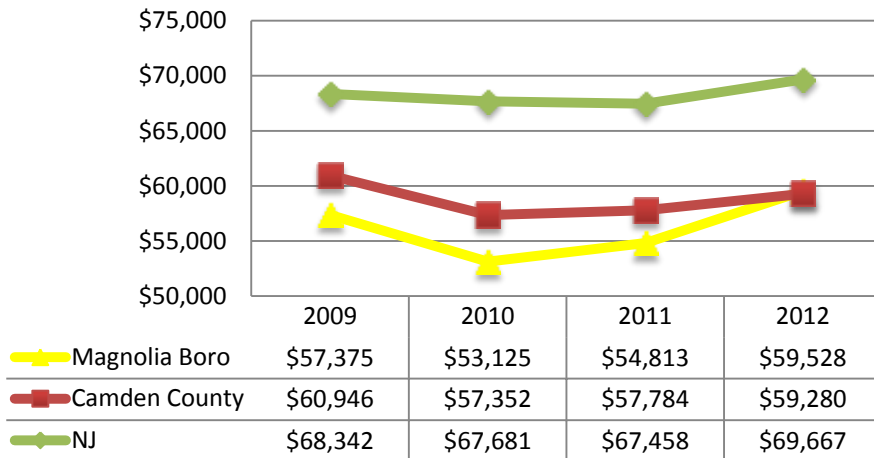
% change 2011-2013

Magnolia Boro: 2.9 Camden County: 1.7

***Housing occupancy and prices are from the 2012 American Community Survey. Average property tax is from the New Jersey's Department of Community Affairs website.

Economic Indicators***

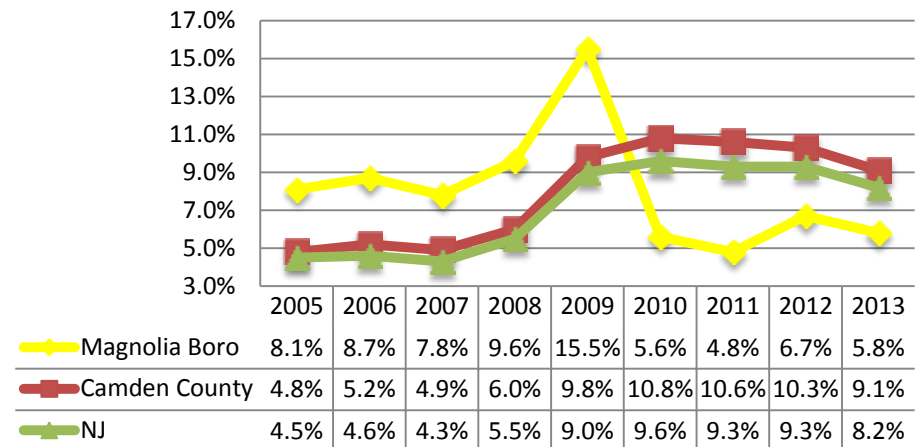
Median Household Income



% change 2009-2012

Magnolia Boro: 3.8 Camden County: -2.7 NJ: 1.9

Unemployment Rate



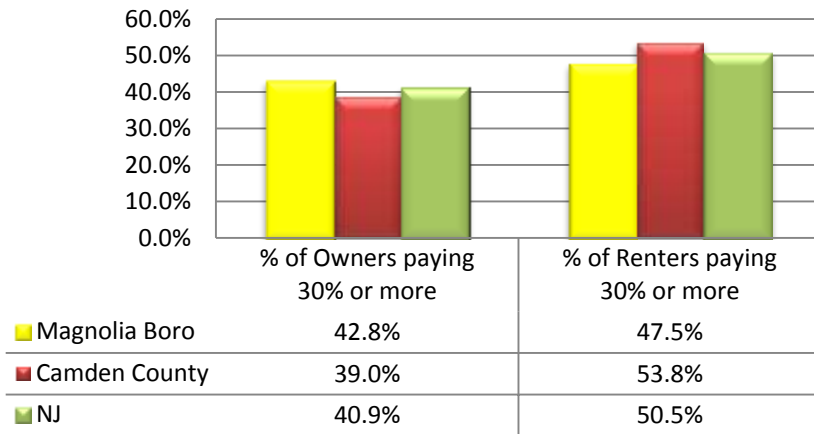
% change 2011-2013

Magnolia Boro: 20.8 Camden County: -14.2 NJ: -11.8

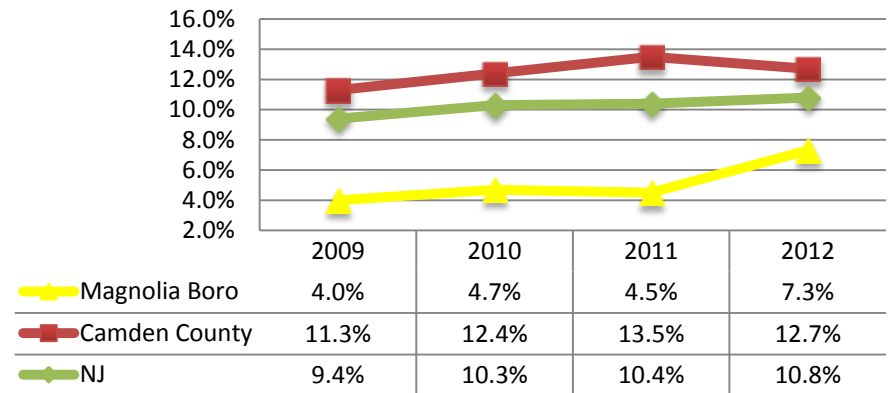
***Household income data is from the American Community Survey. The unemployment rates are from the NJ Department of Labor and Workforce Development.

Municipal Profiles were prepared by the Senator Walter Rand Institute for Public Affairs at Rutgers University-Camden

% of Home Owners and Renters Paying more than 30% of their Income on Housing



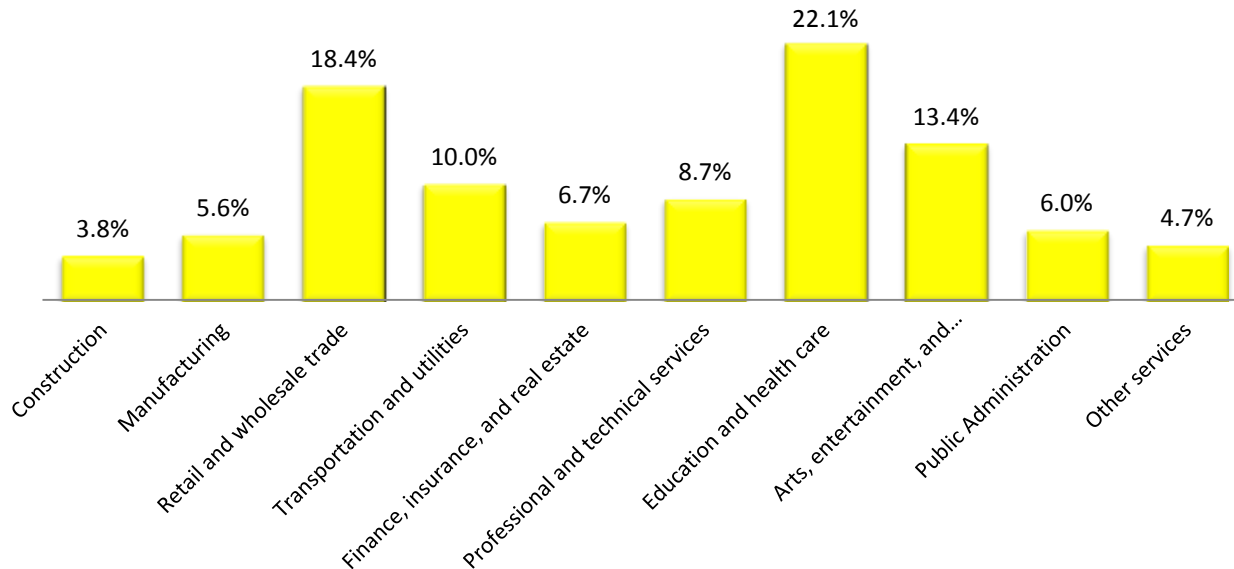
Poverty Rate



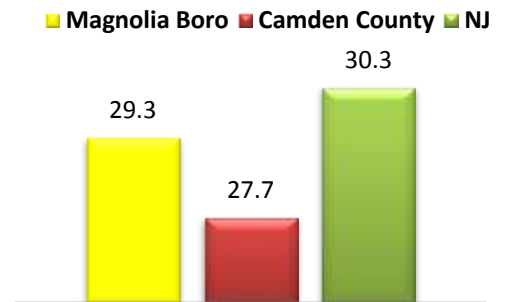
% change 2009-2012
 Magnolia Boro: 82.5 Camden County: 12.4 NJ: 14.9

***Housing affordability and poverty rates are from the American Community Survey.

Percentage of Magnolia Boro Workforce Employed by Sector*



Mean Travel Time to Work (Mins.)



Modes of Transportation to Work	%
Drove Alone	78
Carpooled	9.3
Public Transportation	6.5
Work from Home	1.6
Walked	3.6
Other Means	1

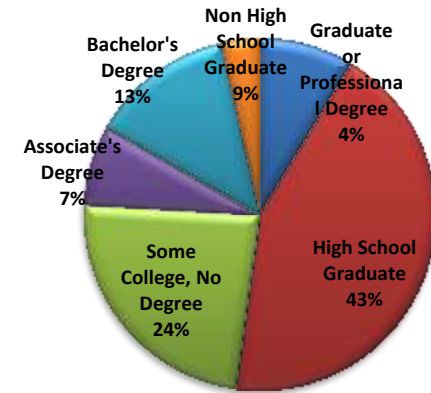
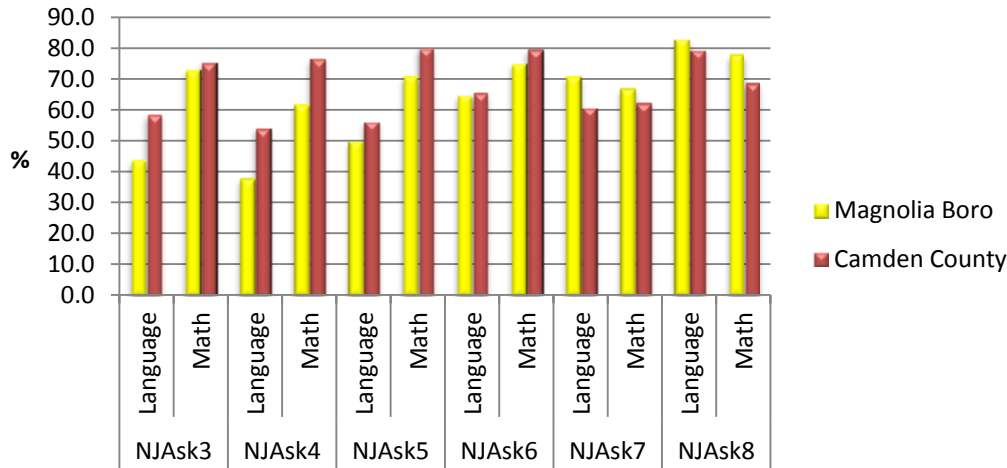
*Arts, Entertainment and Accommodations. Also this data is the sectors in which residents work in, and not the percentage of sector jobs in the Municipality.

***Workforce and commute data is from the America Community Survey. Travel time to work is from the 2012 American Community Survey.

Education***

NJASK 3rd-8th Grade: Percentage of Students Scoring Proficient or Higher

Highest Level of Education Attainment: People 25 years and over



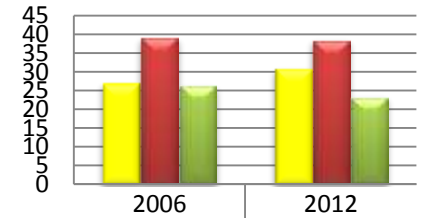
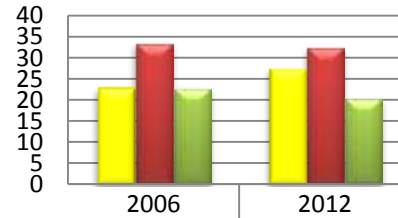
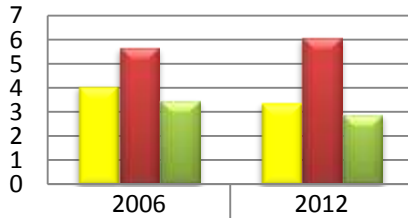
***NJASK data is from the NJ Department of Education 2012 and the education attainment level is from the America Community Survey.

Crime***

Violent Crime Rate

Nonviolent Crime Rate

Total Crime Rate



	2006	2012
Magnolia Boro	4.1	3.4
Camden County	5.7	6.1
NJ	3.5	2.9

	2006	2012
Magnolia Boro	23	27.6
Camden County	33.6	32.5
NJ	22.9	20.5

	2006	2012
Magnolia Boro	27.1	31
Camden County	39.3	38.6
NJ	26.4	23.4

% Change 2006-2012

Magnolia Boro -17.1%
Camden County 7.0%
New Jersey -17.1%

Magnolia Boro 20.0%
Camden County -3.3%
New Jersey -10.5%

Magnolia Boro 14.4%
Camden County -1.8%
New Jersey -11.4%

***The crime data is from the FBI Uniform Crime Report

Municipal Profiles were prepared by the Senator Walter Rand Institute for Public Affairs at Rutgers University-Camden